

Senate Attendance in 2015-2016

Table 1
Senate Attendance, 2015-2016
by Category of Membership and Meeting Date
(n =162)¹

Membership by Category	Sept 2015	Oct 2015	Nov 2015	Jan 2016	Feb 2016	Mar 2016	Apr 2016	May 2016	Per Cent
LA&PS (40)	28	22	26	27	27	19	26	18	60.3
Education (4)	3	2	2	2	2	0	1	1	41.2
FES (4)	4	3	4	0	3	1	1	0	50.0
Arts, Media, Performance & Design (8)	5	1	0	2	3	2	1	0	22.7
Glendon (8)	6	3	5	5	3	1	3	3	45.3
Lassonde (5)	5	4	4	3	5	2	5	2	75.0
Health (11)	9	11	8	10	6	8	7	7	75.0
Osgoode (4)	1	2	2	2	1	1	2	1	37.5
Schulich (6)	5	4	3	6	3	6	4	5	75.0
Science (9)	9	6	7	6	5	6	8	5	72.2
All Faculty Members (99)	75	58	61	63	58	46	58	42	58.2
Librarians (2)	2	2	0	2	2	1	0	2	69.5
President (1)	1	1	1	1	1	1	0	1	87.5
Vice-Presidents (4)	4	4	4	4	4	2	3	1	81.2
Deans/Principal/ Librarian (12)	10	5	6	5	8	5	4	4	49.5
Students (28)	15	9	7	9	14	11	8	5	35.2
Committee Chairs(3)	3	2	3	3	3	2	4	2	55.0
Other Members (13)	10	11	12	10	10	7	7	11	75.0
Number Senators Attending (Percent)	120 (74.0)	92 (56.7)	94 (58.0)	97 (60.7)	100 (62.2)	75 (46.2)	84 (52.5)	68 (42.7)	(56.3)

¹ Maximum size of Senate 167. However, totals in the tables and graphs do not include the Chancellor and members of the Board of Governors. Two committee chairs were already members of Senate.

Table 2
Senate Attendance 2012-2013 to 2015-2016
by Category of Membership and Percentage

Membership Category	2012-2013	2013-2014	2014-2015	2015-2016
All Faculty Members (99)	51.1	62.8	58.0	58.2
Education (4)	47.0	75.0	32.1	41.2
Environmental Studies (4)	59.3	61.1	61.3	50.0
Arts, Media, Performance & Design (8)	25.0	45.8	35.2	22.7
Glendon (8)	42.2	48.6	54.5	45.3
Health (11)	55.0	59.5	68.7	75.0
Lassonde (5)	n/a	60.0	67.2	75.0
Liberal Arts and Professional Studies (40)	53.4	72.2	63.4	60.3
Osgoode (4)	47.0	30.5	39.3	37.5
Schulich (6)	54.2	59.2	64.3	75.0
Science (9)	66.0	66.6	49.4	72.2
Librarians (2)	87.5	83.3	64.3	69.5
President / Vice-Presidents (5)	78.1	89.0	93.2	82.5
Deans / Principal / Librarian (12)	37.5	67.5	63.7	49.5
Students (28)	36.5	32.5	45.4	35.2
Committee Chairs (3)	42.5	77.7	67.6	55.0
Other Members (13)	64.5	65.8	64.3	75.0
Percentage Attendance	50.0	59.6	58.0	56.3

Table 3
Ranked (Descending)
Attendance in 2015-2016 by Category

President / Vice-Presidents	82.5
Health	75.0
Lassonde	75.0
Other Members (Chair of Senate, etc)	75.0
Schulich	75.0
Science	72.2
Librarians	69.5
Liberal Arts & Professional Studies	60.3
All Faculty Members	58.2
Committee Chairs	55.0
Environmental Studies	50.0
Deans / Principal / Librarian	49.5
Glendon	45.3
Education	41.2
Osgoode	37.5
Students	35.2
Arts, Media, Performance & Design	22.7

Table 4
Senate Attendance in 2015-2016
by Meeting Date (n = 162)

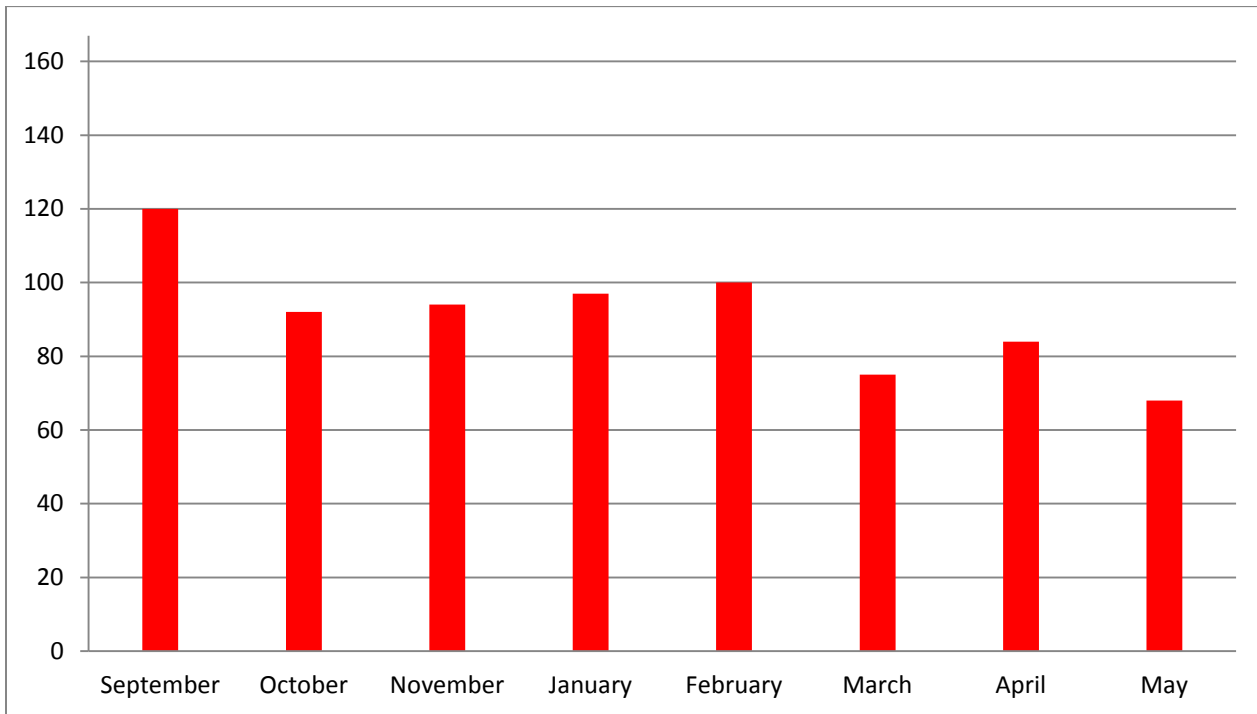


Table 5
Senate Attendance
2008-2009 to 2015-2016
by Year and Average

