

VPRI Annual Update (2016)

Senate

Dr. Robert Haché, Vice-President Research & Innovation

Recognizing Leadership in Research 2016

**President's
Research
Excellence Award
2016**



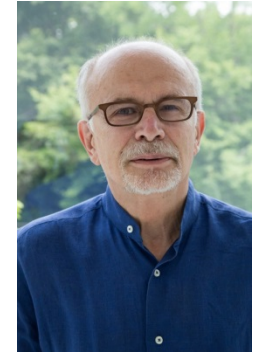
Bridget Stutchbury
Distinguished
Research Professor
Department of Biology

**President's Emerging
Research Leadership
Award 2016**



**Rebecca Pillai
Riddell**
Assoc. Professor
Department of
Psychology

**Glendon Principal's
Research Excellence
Award**



Roberto Perin
Professor
Department of History
Glendon College

Recognizing Leadership in Research 2016

New Canada Research Chair:

Canada
Research Chair
Tier I



Joel Katz
Professor
Department of
Psychology

New Royal Society Fellows



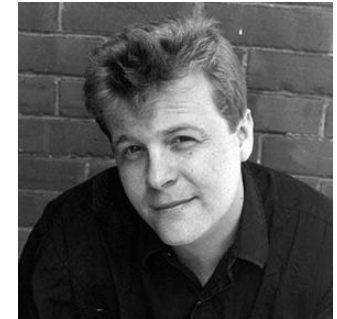
**Janine
Marchessault,**
Professor,
Department of
Cinema & Media Arts
in the School of the
Arts, Media,
Performance &
Design



Douglas Hay
Professor Emeritus
Osgoode Hall Law
School and the
Department of
History, Faculty of
Liberal Arts &
Professional
Studies



**Rachel
Koopmans,**
Associate
Professor,
Department of
History, Faculty of
Liberal Arts &
Professional
Studies



Christian Bök
Alumnus (PhD '98)

York Research Chairs

Tier I



Nantel Bergeron
Applied Algebra



Ellen Bialystok
Lifespan Cognitive
Development

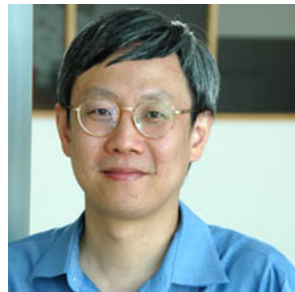


Chun Peng
Women's
Reproductive
Health



Stepan Wood
Environmental
Justice and
Sustainability

Tier II



Jimmy Huang
Big Data Analytics



Shayna Rosenbaum
Cognitive Neuropsychology



Amro Zayed
Genomics

Current York Research Chair Statistics (2014 – 2016)

Total # of Awarded Chairs	17
Affiliated with Social Science and Humanities	8
Affiliated with Natural Sciences / Health / Engineering	9
Centrally Supported	12
Faculty-based	4
VISTA funded	1

Minister of Science SSHRC announcement

- **York University hosted Minister of Science Kirsty Duncan on Sept. 9, 2016.**
- **Minister Duncan made the national announcement that included \$7 million in Social Sciences and Humanities Research Council (SSHRC) Funding for York Researchers**



The announcement included for York:

- \$2.5 million over five years for Dr. Valerie Preston (Department of Geography) whose research in migration and settlement is contributing to York's leadership in that field;
- \$781,594 for 15 Insight Development Grants;
- \$3,203,210 for 25 Insight Grants;
- \$573,391 for 3 Partnership Development Grants.

Research Success - *Vision: Science to Applications (VISTA)*

- On September 8, 2016 York hosted The Hon. Judy Sgro, Member of Parliament for Humber-Black Creek, to announce \$33.3M in federal support for VISTA, through the Canada First Research Excellence Fund (CFREF).



- VISTA is 1 of 13 projects funded nationally in Round 2 of CFREF;
- \$33.3M in federal funding;
- \$19M in partner funding;
- \$122M total project envelope;
- Will involve upwards of 70 York faculty and 225 new graduate students and post-doctoral fellows.

Fall RESEARCH Statistics OVERVIEW

SUMMARY

- Research outputs increasing steadily;
- Publication and citation intensity still trails total numbers of publications and citations;
- Total university research income increasingly influenced by large scale projects;
- Total Tri-council research income continuing to increase;
- Individual investigator applications and grants decreasing.

CONCLUSION

- Achieving our shared goals contained in the **Plan for Intensification and Enhancement of Research (PIER)** will be dependent on building and broadening individual research engagement.

National Research Ranking

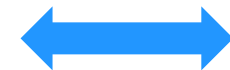
(Research Infosource – based on Thomson-Reuters)

Total Publications 2015

Rank	University
14	Queen's *
15	Saskatchewan *
16	Guelph
17	Simon Fraser
18	Victoria
19	York
20	Carleton
21	Sherbrooke *
22	Concordia
23	Memorial *
24	UQAM
25	Ryerson

* Has a medical school

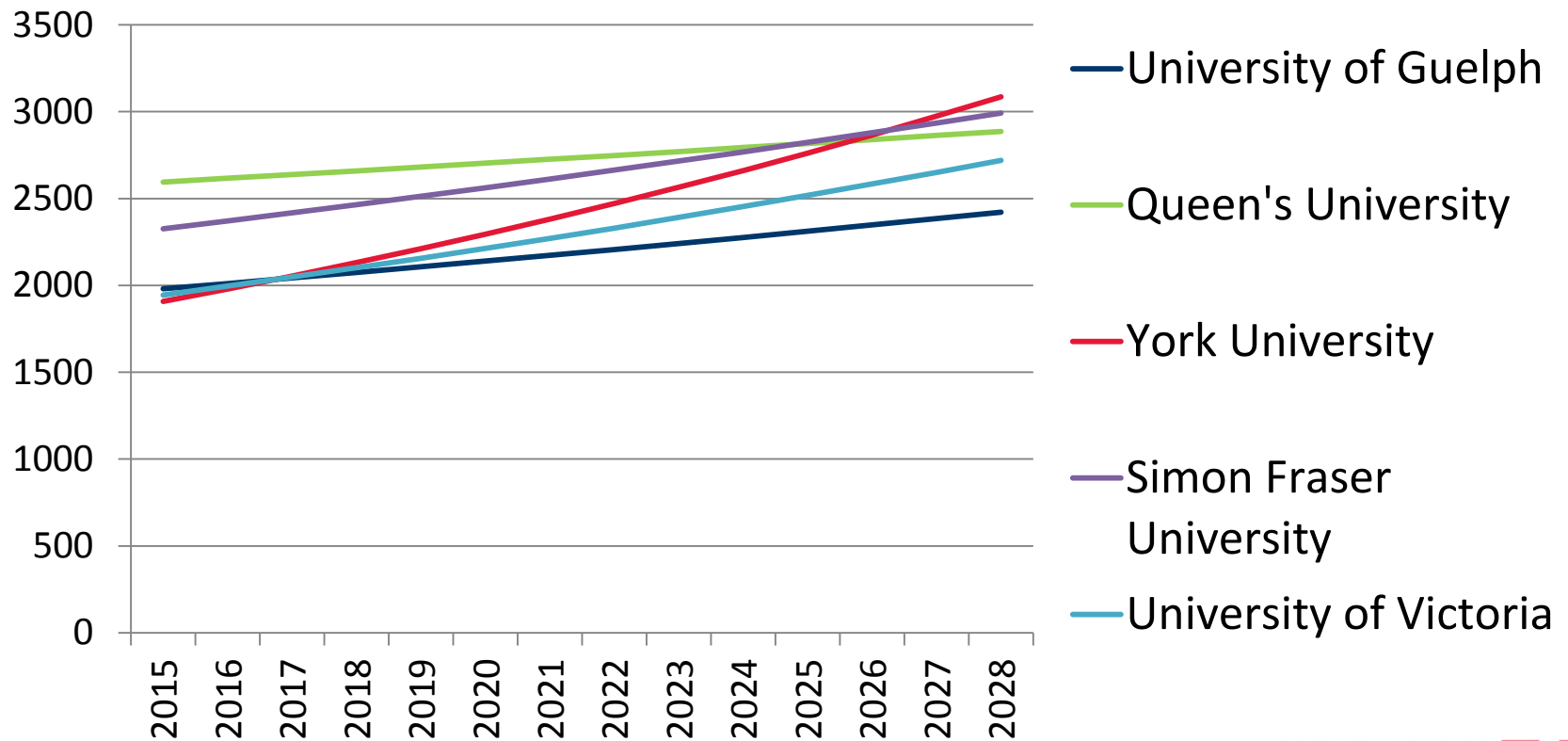
5 Year Ranking Trend:



Scholarly Output: Projected Growth based on 5-yr growth rate average (2010-2015)

York, Queen's, Guelph

- Current growth rates indicate York will overtake Guelph and Uvic in 2017, Queen's in 2026, and SFU in 2027.



National Research Ranking

(Research Infosource – based on Thomson-Reuters)

Publications Intensity 2015

Rank	University
11	Guelph
12	Queen's *
14	Victoria
15	Simon Fraser
18	Saskatchewan *
19	Carleton
23	Concordia
26	Ryerson
27	Sherbrooke *
28	York
29	Lethbridge
33	Memorial *
39	UQAM

5 Year Ranking
Trend:



* Has a medical
school

National Research Ranking

(Research Infosource – based on Thomson-Reuters)

Publication Impact 2015

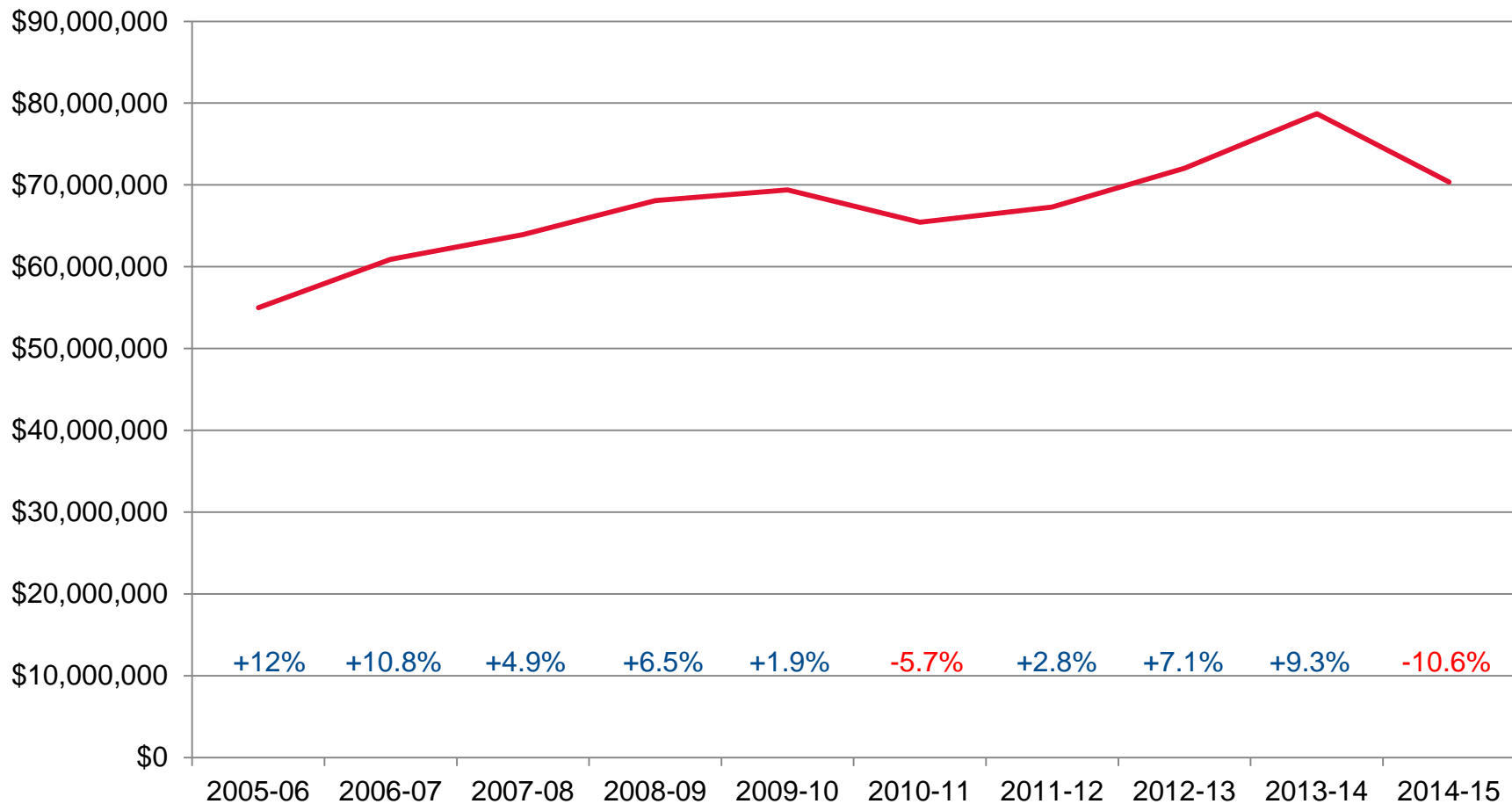
Rank	University
9	Victoria
11	Simon Fraser
13	Queen's *
18	Saskatchewan *
22	UQAM
23	Sherbrooke *
24	Memorial *
25	Guelph
26	Brock
27	York
28	Concordia
31	Carleton
42	Ryerson

* Has a medical school

5 Year Ranking Trend:



YORK RESEARCH TOTAL INCOME & GROWTH RATE (%)



National Ranking (Total Research Funding):

23 23 23 23 23 22 22 21 21 21

Source: Research Infosource



National Research Ranking

(Research Infosource – based on Thomson-Reuters)

Total Research Income – Fiscal Year 2015

Rank	University	\$000
11	Queen's *	\$187,338
13	Saskatchewan *	\$168,947
15	Guelph	\$143,581
17	Sherbrooke *	\$126,828
18	Simon Fraser	\$117,404
19	Memorial *	\$104,395
20	Victoria	\$102,845
21	York	\$70,358
22	UQAM	\$66,775
23	Carleton	\$55,335
25	Concordia	\$45,817
26	Ryerson	\$44,815

5 Year Ranking
Trend:



* Has a
medical
school

Tri-Council Success continues to grow overall

	2013-14	2014-15	2015-16
SSHRC	\$10,416,945	\$9,856,984	\$10,590,660
NSERC	\$10,056,286	\$11,993,873	\$11,701,137
CIHR	\$3,728,096	\$3,237,169	\$3,414,526
Total	\$24,201,327	\$25,088,026	\$25,706,323

Tri-Council Grants impact share of other funding sources:

- Canada Research Chairs
- Tri-Council Graduate Studentships
- Federal Indirect Costs
- CFI - Innovation Fund
- CFI – John R. Evans Leaders Fund
- Canada Excellence Research Chairs

* The Social Sciences and Humanities Research Council (SSHRC); the Natural Sciences and Engineering Research Council (NSERC); and the Canadian Institutes of Health Research (CIHR).

Tri-Council Challenges For Individuals

	2011-2012	2012-2013	2013-2014	2014-2015	2015-2016
SSHRC Insight Development Grant	\$195,575	\$519,157	\$618,551	\$888,561	\$810,997
SSHRC Insight Grant	\$926,517	\$2,451,216	\$3,716,024	\$3,688,555	\$4,117,300
SSHRC Connection Grant	-	\$631,409	\$455,834	\$299,477	\$452,034
NSERC Discovery Grant	\$5,492,097	\$5,602,177	\$5,600,450	\$5,728,607	\$5,811,165
NSERC Engage Grant	\$199,700	\$292,712	\$543,695	\$646,563	\$643,077
CIHR Operating Grant	\$4,148,182	\$4,419,532	\$3,728,096	\$3,237,169	\$3,414,526
TOTAL	\$10,962,071	13,916,203	14,662,650	14,488,932	15,249,099

	2011-2012	2012-2013	2013-2014	2014-2015	2015-2016
# Tenure-Stream Faculty	1,368	1,382	1,389	1,368	1,362

Applications

SSHRC	200	182	184	176	155
CIHR	90	101	80	49	48
NSERC	163	176	124	117	130
Total	453	459	388	361	333

Successful

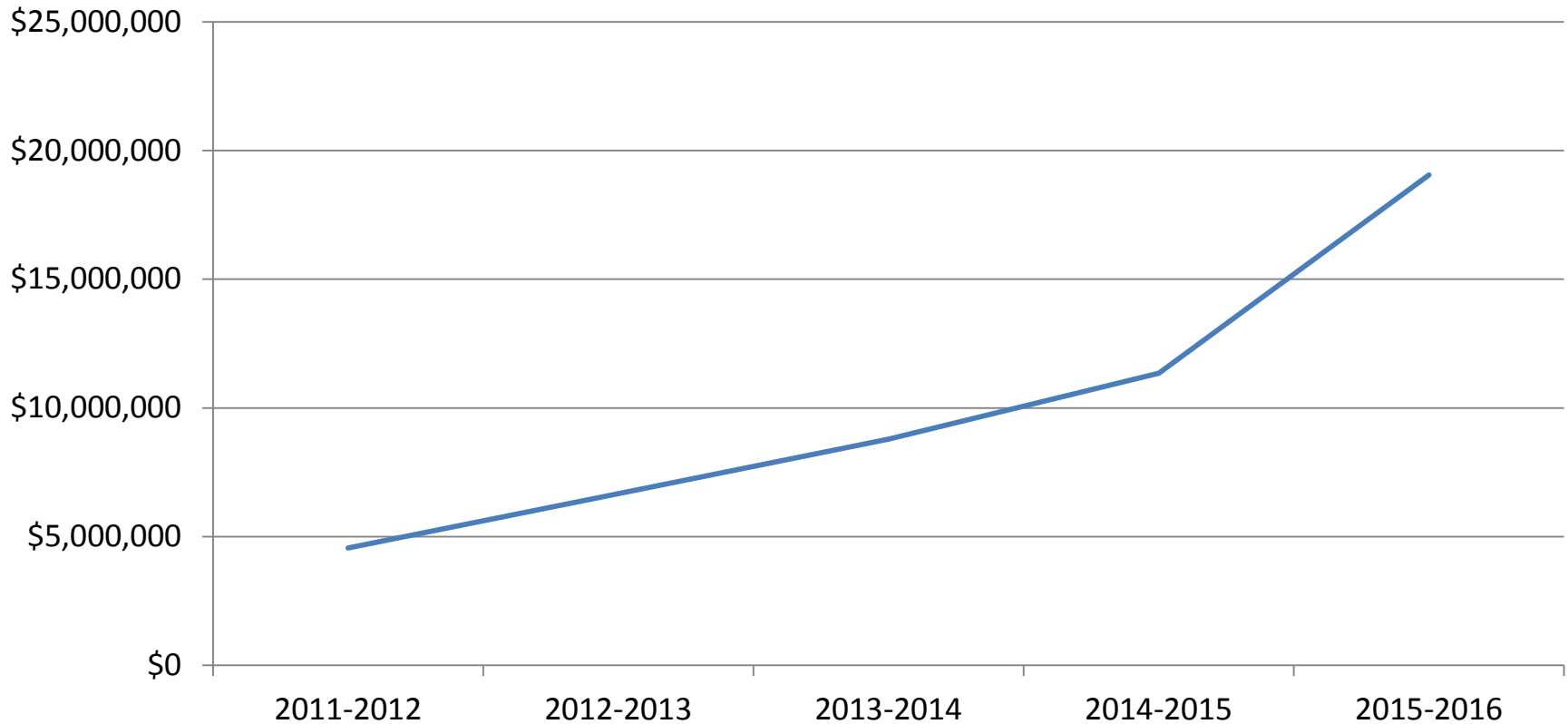
SSHRC	89	66	62	46	62
CIHR	17	27	10	6	6
NSERC	81	98	68	79	55
Total	187	194	144	137	123

All Other Grants:

	2011-2012	2012-2013	2013-2014	2014-2015	2015-2016
# Applications	292	204	269	326	280
# Successful	134	94	103	160	136
Success rate	45.6%	46%	38.3%	49.1%	48.6%

Large-scale Applications supported by SIRI (Strategic and Institutional Research)

	2012-2013	2013-2014	2014-2015	2015-2016
# Applications	17	34	89	87
# Successful	9	14	22	41
Success rate	46.6%	50%	41.1%	45.4%



PIER Recommendations Relevant to Increasing Individual Participation in Research Funding Opportunities

Primary

- #2 Work Together to Build Research Engagement.
- #6 Improve the effectiveness of research time within workloads.
- #7 Position faculty for research success.

Secondary

- #3 Incorporate research into all aspects of York's collective planning culture.
- #5 Build research intensity into the hiring, tenure and promotion processes of regular full-time faculty.
- #8 Invest in faculty through the development of research chairs and professorships.

Innovation York

New Developments

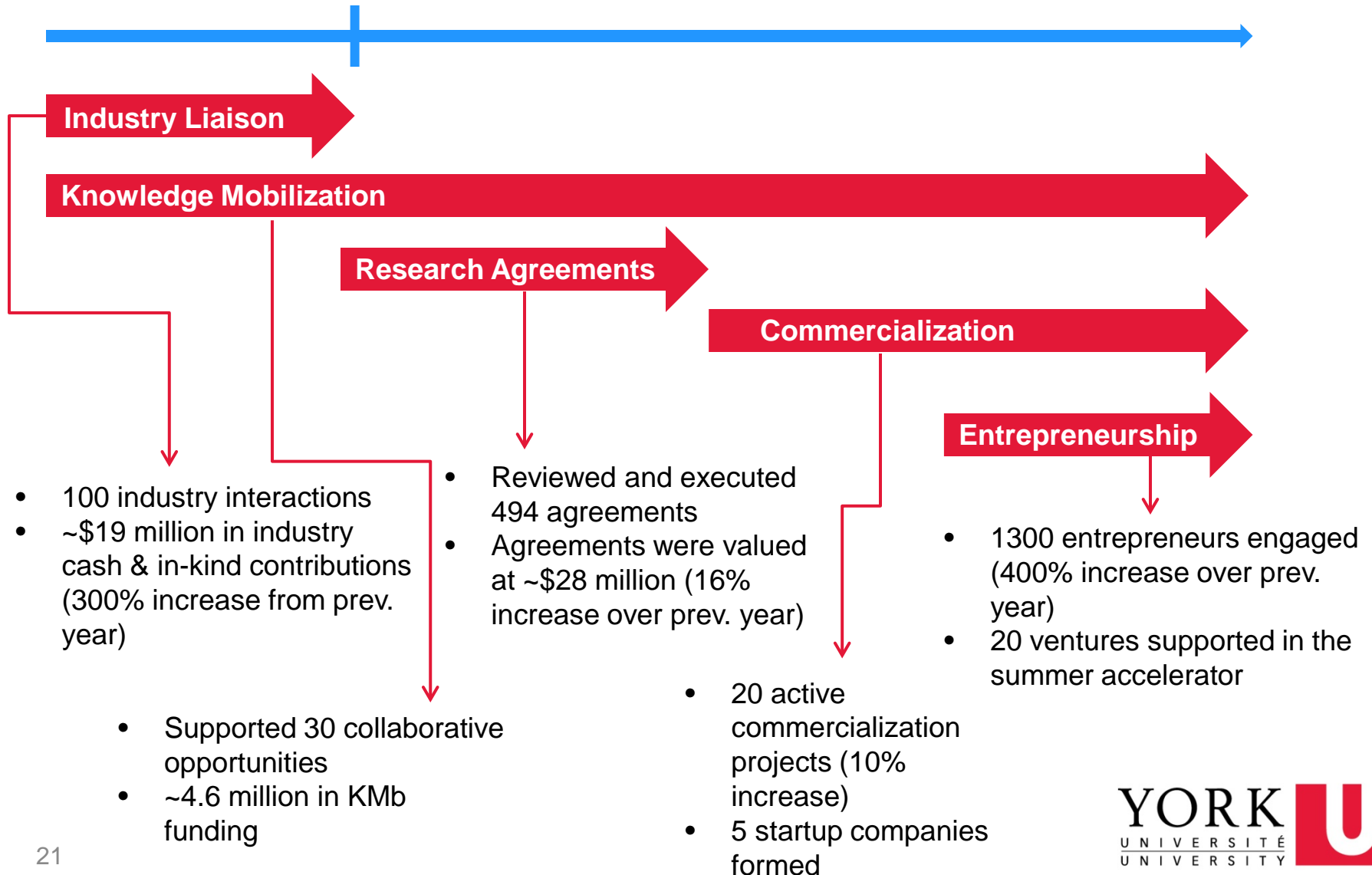
- Integration of Knowledge Mobilization Unit into Innovation York
- Relocation of York off-campus accelerator to IBM Campus, Markham (December 2016)
- Creation of new VISTA dedicated commercialization and knowledge mobilization supports (CFREF funded)
- Development of new Innovation York incubator / entrepreneurship space within York's new Markham storefront (YU-MIC)
- Launch of the new LaunchYU pre-accelerator workshop series in February 2017
- Review of York innovation landscape
 - Leading to Innovation Coordination Plan

Innovation York Activity

Pre-Award

Post-Award

Research Grant / Contract



Coming Attractions

- Ramp up of implementation of the Plan for the Intensification and Enhancement of Research (PIER);
- Canada Foundation for Innovation (CFI) large-scale projects;
- Canada Excellence Research Chair (CERC) applications;
- Anticipated call for Networks of Centres of Excellence (NCE) applications;
- Enhancing research data analysis.

Comments, Questions, Discussion

